

▶▶▶ 標準配備 STANDARD ACCESSORIES

- | | | | |
|-----------------------|-----------------|---------------------------------|----------------------------------|
| 1.滅火器1組 | 5.噴油磁座1組 | 1. Fire extinguisher1 set | 5. Flush magnetic base1 set |
| 2.專業電極頭1組 | 6.工作燈1支 | 2. Electrode chuck1 set | 6. Work lamp1 pc |
| 3.光學尺(X.Y.Z三軸)1組 | 7.油液過濾網2個 | 3. Linear scale1 set | 7. Filter2 pcs |
| 4.工具箱1組 | 8.冷卻裝置1組 | 4. Tools box1 set | 8. Cooler1 set |

▶▶▶ 選用配備 OPTIONS

NA: 不提供 Not available O: 提供 Available

項目 ITEM	型號 MODEL	A645+	A540+	A430+
電極夾具系統	AUTO TOOLING SYSTEM	3R (MACRO), EROWA (ITS)		
線性刀庫* Linear magazine*	最大電極數目 Electrode No.	4 / 5 / 6	4 / 5	4
	最大電極承載重量 Max. Weight of electrode	5		
	最大電極承載總重量 Max. total Weight of electrode	15 (幾何對稱 / Geometric symmetry)		
旋轉刀庫* Rotary magazine*	直徑/長度 Diameter / length	65 / 120		
	最大電極數目 Electrode No.	12 / 16 / 20		
	最大電極承載重量 Max. Weight of electrode	4		
C軸 C-axis	直徑/長度 Diameter / length	65 / 120		
	結構 Structure	內藏式 Built-in type		
	解析能力 Resolution	0.001		
	旋轉速度 Rotation	MOLDMASTER (0~14), 3R (0~14), EROWA (0~14)		
	最大電極承載重量 Max. Weight of electrode	25		
	最大電極慣性矩 Max. electrode moment of inertia	75		
	介電質油液的噴/吸選擇數 Dielectric-fluid injection/suction select	4 / 1		
	可程式噴油口 Programmable flushing nozzle	O		
	介電質油液冷卻器 Dielectric-fluid cooler unit	O		
	穩壓器 (AVR)** Voltage regulator unit (AVR)**	O		
	操作系統 System interface	DOS / WINDOWS (Touch panel)		
	特殊迴路 Optional discharge circuit	1.鏡面迴路 2.光澤加工迴路 3.碳化鎢迴路 4.大面積迴路 5.高速石墨迴路 1.Mirror polishing machining circuit 2.HQSP circuit 3.Cemented carbide machining circuit 4.Large area circuit 5.High Speed Graphite circuit		
	高速光澤加工系統 High quality super polishing system (HQSP)	A645S+	A540S+	A430S+

- 為配合線性和旋轉自動刀庫的運作，未購買C軸者，必須購買3R或EROWA自動夾頭
- 請用戶調查區域電壓的穩定情況，電壓變動在超過+15%或-10%時，應特別裝設AVR，以提昇電子零件壽命。
- HQSP加工面積和粗糙度關係 500 (Ra 0.15µm), 400cm² (Ra 0.25µm)
- Linear and Rotary magazine must use air chuck (3R, EROWA).
- When variation of the AC power source is +15% over or -10% under, we recommend using AVR to improve stability.
- The relationship between machining area and surface roughness of HQSP is: 500 (Ra 0.15µm), 400cm² (Ra 0.25µm)

A540+ / A430+



MOLDMASTER
億曜企業股份有限公司
YIHAWJET ENTERPRISES CO., LTD.

總公司 HEAD OFFICE

709031台南市安南區科技一路10號
No.10, Keji 1st Rd., Annan Dist.,
Tainan City 709031, Taiwan
Tel: 886-6-384-0373 E-mail: yihawjet@ms13.hinet.net
Fax: 886-6-384-0375 http://www.yawjet.com

台北服務處 TAIPEI OFFICE

247035新北市蘆洲區復興路111~11號5F
5F., No. 111-11, Fuxing Rd., Luzhou Dist.,
New Taipei City 247035, Taiwan
TEL: 886-2-8285-8171 FAX: 886-2-2283-9950

大陸代理服務處

廣東省中山市 TEL: 135-323-39305
江蘇省昆山市 TEL: 132-051-56393

2024/02©Fashion Design 04-22338796



A645+

CNC A-SERIES

ADVANCED ELECTRIC DISCHARGE MACHINE
加工槽升降式放電加工機

- High Speed
 - High Accuracy
 - Elevating Work Tank
 - Fully Automatic
- 高速度 / 高精度 / 升降槽式 / 全自動化



億曜企業股份有限公司
YIHAWJET ENTERPRISES CO., LTD.

升降式加工槽 (台灣專利 M373250)

無障礙空間設計和可程式化控制加工槽高度，允許三面近身操作並方便機械手臂上下工件。

新式Z軸高精密機頭

高荷重、高剛性的獨特主軸設計，達成主軸8m/min高速排渣，長年使用主軸不下垂。

提昇機器精度 (選配±0.1°C冷卻器，恆溫下)

機台鑄件包覆式設計防止灰塵進入機構，同時利用油液冷卻盡可能讓機台溫度一致，XYZ軸皆經雷射補正後，全行程在±1µm內，以確保長時間自動化操作所需要的高精度加工。

新電源與控制系統

新型放電電源控制系統，電路板壽命更長，減少電極消耗。Fuzzy控制技術達成主軸8m/min高速排渣。

自動逆洗過濾系統 (選配)

減少二次放電，提昇加工效能及模具角隅精度，並節省過濾費用及更換時間。

Windows介面 (選配)

1. 更友善的圖形化操作介面，減少使用者學習時間。
2. 多樣化的量測功能 (三點求圓，非對稱穴心，非對稱柱心，平行度校正..)
3. 多工件自動量測，針對相同尺寸工件，可自動量測並紀錄座標，方便程式編輯。
4. 量測程式化，可將量測功能編輯到程式中，方便自動化需求。
5. 程式檢查，提醒使用者程式錯誤行數和原因。
6. 遠端監控，可隨時隨地透過，手機，平板，筆電監控機台。
7. 遠端程式編輯，可隨時隨地利用筆電編輯程式。
8. 可搭配EROWA機外預校機。
9. 可搭配任何3次元量床電極補償檔案。

Elevating Work Tank (Taiwan patented No.:M373250)

Accessible space design and programmable height control of the work tank; Enable closer machine operations from three different directions and easily to in and out workpiece by robot.

Newly Designed High Precision Head for Z Axis

Features heavy weight and strong rigidity main axis implementation, which keeps traverse rate at 8 m/min high-speed and also ensure the main axis usage durability from daily operation.

Improved Machine Accuracy (With Optional ±0.1°C Cooler Equipped, Under Constant Temperature)

The fully-covered body machine design makes the machine dust free in the structure, and the cooling oil system keeps the machine temperature as stable as possible. The X, Y, Z axis are calibrated with laser equipment to achieve ±1µm during axis traveling.

Newly Designed Power Supply & Control System

With the new power supply and control system which extends the life of electrical boards, reduces the electrode wear. The fuzzy control technology enables high traverse rate at 8 m/min without over shoot.

Automatic Back Flushing Equipment (Optional)

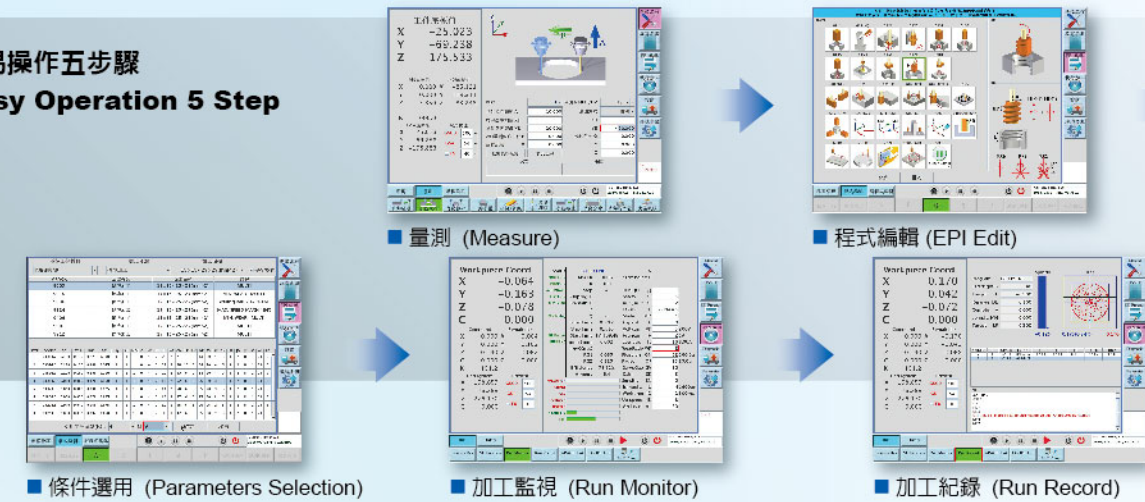
Reduce secondary discharge to improve machining performance and precision mold corner, cost down and replacement filter time.

Windows Interface (Optional)

1. More user friendly graphical interface improves the user familiarity with the system also reduces the time of learning.
2. Diversification measurement function (3 points for Center, unsymmetrical groove unsymmetrical column, parallel calibration)
3. Multi-workpiece automatic measurement with the same size, the coordinates can be recorded for the convenience of program editing.
4. Programmable measurement, the measurement function can be edited into program, for the needs of automation operation.
5. Program check, alert the user program errors and the cause.
6. Remote monitoring by mobile phones, pads, or laptops anytime anywhere.
7. Remote program editing on laptops anywhere.
8. Compatible with EROWA calibration equipments.
9. Compatible with any coordinate measuring machine (CMM) electrode compensation files.

簡易操作五步驟

Easy Operation 5 Step

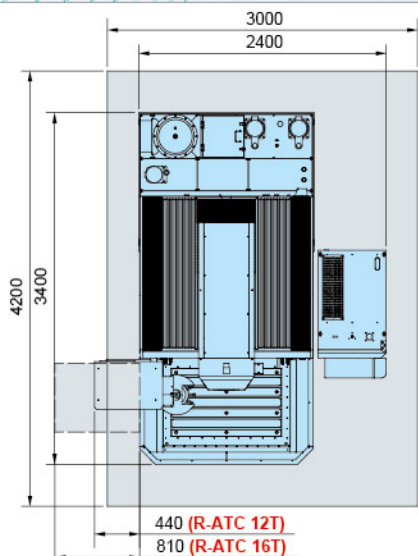


機床規格 SPECIFICATIONS

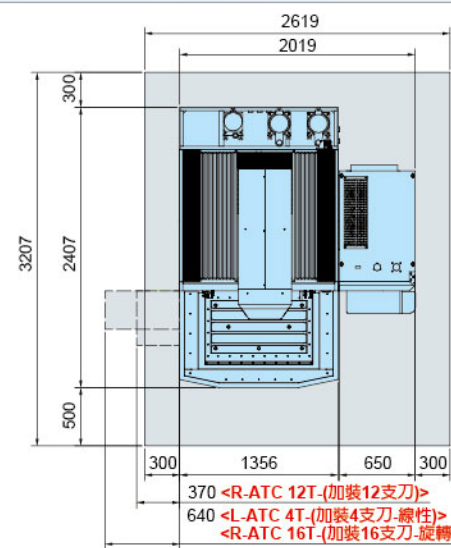
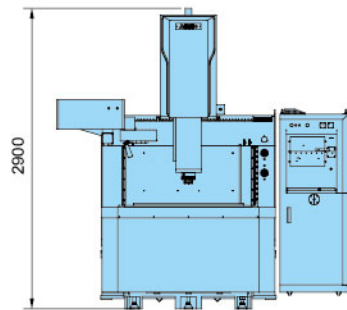
項目 ITEM	型號 MODEL	A645+	A540+	A430+
加工槽內部尺寸	Work tank internal dimensions (WxDxH) mm	1175 x 760 x 500	900 x 620 x 400	750 x 530 x 350
最大工件尺寸	Max. workpiece dimensions (WxDxH) mm	1050 x 650 x 420	820 x 450 x 400	550 x 350 x 350
最大工件重量	Max. workpiece weight kg	1500	800	500
最大電極重量	Max. electrode weight kg	100	120	80
X, Y, Z軸行程	X, Y, Z axis stroke mm	650 x 450 x 450	500 x 400 x 400	400 x 300 x 300
最大移動速度	Maximum moving speed mm/min	X, Y, Z axis: 2000		
工作台尺寸	Table dimensions (WxD) mm	1050 x 650	820 x 450	550 x 350
電極夾頭板與工作台的距離	Distance between plate and table mm	350~800	250~650	300~600
機械體積	Machine tool dimensions (WxDxH) mm	3400 x 1650 x 2750	1400 x 2400 x 2400	1250 x 2100 x 2150
電子箱體積 (WxDxH)	Volume of electric cabinet (WxDxH) mm	650 x 1080 x 1750		
機械重量	Machine tool weight kg	4500	2500	2200
電子箱重量	Weight of electric cabinet kg	365kg (35A) / 390kg (50A) / 420kg (70A) / 470kg (105A)		
可選用電源容量 *	Available power supplies * type	35A / 50A / 70A / 105A		
油箱容量	Dielectric reservoir capacity ℓ	1000	800	600
佈置面積 (AxB) (CxD)	Layout (AxB) (CxD) mm	(3000 x 4200) (2400 x 3400)	(2650 x 3200) (2050 x 2400)	(2500 x 3000) (2170 x 2300)
可設定驅動單位	Setting unit increments µm	1		
光學尺解析單位	Optical scale resolution µm	1		

- 加工槽內部尺寸係指工作台上可用之範圍。
- 佈置面積 AxB: (機台+預留空間), CxD: (機台)。
- 本公司保留規格及數值變更之權利，若有更改時恕不另行通知，並請於訂購時確認。
- 電源容量和對應功率: 35A(4KVA) / 50A(5.5KVA) / 70A(8KVA) / 105A(12KVA)
- The work tank internal dimensions means the applicable range on the table.
- Layout: AxB: (Machine+Reserve space), CxD: (Machine).
- Specifications are subject to change without prior notice due to continual research and development.
- Ampere (Power): 35A(4KVA) / 50A(5.5KVA) / 70A(8KVA) / 105A(12KVA)

佈置面積 LAYOUT

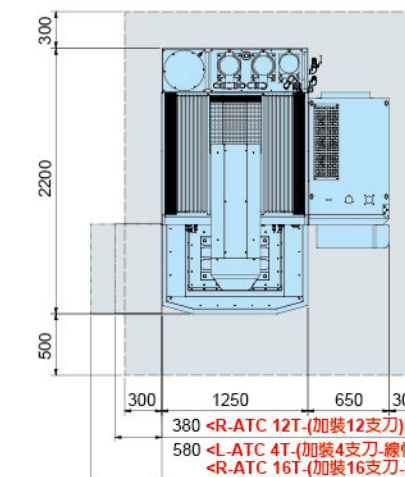
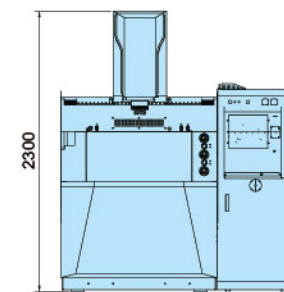


A645+



A540+

- 370 <R-ATC 12T-(加裝12支刀)>
- 640 <L-ATC 4T-(加裝4支刀-線性)>
- <R-ATC 16T-(加裝16支刀-旋轉刀盤)>



A430+

- 380 <R-ATC 12T-(加裝12支刀)>
- 580 <L-ATC 4T-(加裝4支刀-線性)>
- <R-ATC 16T-(加裝16支刀-旋轉刀盤)>

