

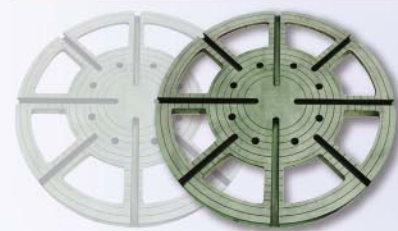
機床規格 SPECIFICATIONS

項目 ITEM	型號 MODEL	UNIT	B-770	B-700	B-600	B-580	B-550
行程 Travel	mm	X=400	X=80	X=80	X=80	X=80	X=80
		Y=750	Y=750	Y=600	Y=450	Y=400	
		Z=180	Z=180	Z=180	Z=180	Z=200	
		Z1=1000	Z1=1200	Z1=1000	Z1=600	Z1=300	
		O=250	O=500	O=300	C=0~360°	C=0~360°	
		C=0~360°	C=0~360°	C=0~360°	A=0~90°	A=0~90°	
A=0~90°	A=0~90°	A=0~90°	[ 特殊選配Option (-15°~+95°) ]				
分度盤 Rotary table	-	B-R500	B-R500	B-R320H	B-R320H	B-R320	
花盤尺寸 Flower plate	mm	Ø900 / Ø1300	Ø900 / Ø1300	Ø700/Ø800/Ø900	Ø700/Ø800/Ø900	Ø700/Ø800/Ø900	
電極荷重 Max. electrode weight	kg	100	100	100	80	80	
工作荷重(置中) Max. workpiece weight	kg	2000	2000	1000	900	900	
最大工件尺寸 Max. workpiece	mm	Ø1600 x 400	Ø1800 x 350	Ø1300 x 250	Ø1200 x 250	Ø1100 x 200	
油槽外徑尺寸 Work tank	mm	1400x820x360	1400x620x320	1240x620x300	-	-	
油箱外徑尺寸 Dielectric fluid reservoir	mm	500x2600x350	1060x2450x400	1000x2200x400	1200x1850x400	1200x1850x400	
油箱容積 Dielectric capacity	Ltr	380	500	500	600	600	
機器總重 Machine weight	kg	3000	2800	2300	1900	1800	
冷卻器 Cooler	-	6000BTU	6000BTU	4000BTU	4000BTU	4000BTU	

■ 本公司保留規格及數值變更之權利，若有更改時恕不另行通知，並請於訂購時確認。 ■ Specifications are subject to change without prior notice due to continual research and development.

花盤 FLOWER PLATE

項目 ITEM	型號 MODEL	UNIT	B-770 (R600)	B-700 (R500)	B-600 (R400)	B-580 (R320H)	B-550 (R320)
行程 Index range	-	0~360°	0~360°	0~360°	0~360°	0~360°	0~360°
盤面尺寸 Table diameter	mm	Ø600	Ø500	Ø400	Ø320	Ø320	
工作荷重-垂直 Loading-Vertical	kg	3000	1600	1200	1000	600	
工作荷重-水平 Loading-Horizontal	kg	4000	2000	1500	1000	1000	
減速比 Ratio	-	1 : 1080	1 : 750	1 : 480	1 : 360	1 : 360	
分割角度 Min. Increment	°	0.001°	0.001°	0.001°	0.001°	0.001°	
定位精度 Positioning accuracy	sec	0.015°	0.015°	0.015°	0.015°	0.015°	
重複精度 Repeat accuracy	sec	0.0015°	0.0015°	0.0015°	0.0015°	0.0015°	
傾斜軸分割角度 Slant angle	-	1	1	1	1	1	
傾斜軸分割角度 Slant angle solution 解析度(特殊配件) (Optional)	°	0.0075°	0.0075°	0.018°	0.018°	0.018°	
剎車 Brake	-	air	air	air	-	-	
重量 Weight	kg	1500	900	600	500	400	



■ FLOWER PLATE  
花盤



**億曜企業股份有限公司**  
**YIHAWJET ENTERPRISES CO., LTD.**

公司/ 70955台南市安南區科技一路10號

**HEAD OFFICE:**

No.10, Keji 1st Rd., Annan Dist.,  
Tainan City 70955, Taiwan

Tel: 886-6-384-0373 Fax: 886-6-384-0375

E-mail: yihawjet@ms13.hinet.net

http://www.yawjet.com

台北服務處/ 247新北市蘆洲區長安街131巷31號4F

**TAIPEI OFFICE:**

4F, No. 31, Lane 131, Chang-an Street, Luzhou Dist.,  
New Taipei City 247, Taiwan

TEL: 886-2-8283-3776 FAX: 886-2-8283-3776

廣東服務處/廣東省東莞市 TEL: 86-769-8530-9765

上海服務處/江蘇省昆山市 FAX: 86-512-5739-4511



**B550 / B580  
CNC (Windows)**



**CNC B-SERIES**

**輪胎模放電加工機**  
**TIRE MOLD EDM**

Specialize for roller,  
Round, Tire Mold

**億曜企業股份有限公司**  
**YIHAWJET ENTERPRISES CO., LTD.**





實現高精密高複雜型模具及零件生產

Designed and engineered for machining of high precision, complicated molds and parts.

CNC B-SERIES



**CNC TIRE MOLD EDM**

**特性**

1. 滾輪、圓輪模具之專用4軸CNC放電加工。
2. X, Y, Z軸3D搖動加工，增加加工效率
3. 依電極的形狀，可選擇搖動加工模式，提高產品精度。
4. X, Y, Z軸定位精度1 $\mu$ m。
5. R軸解析度1/1000度。
6. R1傾斜軸可經由光學尺精確讀出傾斜角度。
7. 可搭配旋轉式R-ATC12/16/20換刀器。
8. 可選配Windows介面，提升自動化能力。
9. 可選配自動逆洗機，保持加工液清潔，提升加工速度。

**Features**

1. 4 Axes CNC machine specialized for roller, round, tire molds.
2. X, Y, Z Axis 3D orbital machining, to increase machining efficiency.
3. The orbital machining mode can be chosen according to the shape of electrode, to increase final workpiece precision.
4. The positional accuracy of X, Y, Z axis = 1 $\mu$ m
5. R axis resolution 1/1000 degree.
6. R1 tilt axis can be read by ENCODER for angle of inclination.
7. Optional R-ATC tool change system (12/16/20 positions) compatible.
8. Optional Windows interface to upgrade automation ability.
9. Optional automatic back-flush system, to keep the dielectric fluid as clean as possible, to ensure machining efficiency at all time.

**TNC TIRE MOLD EDM**

**特性**

1. 滾輪、圓輪模具之專用4軸TNC放電加工。
2. Z軸單軸加工。
3. X, Y, R軸透過外部微電腦控制定位，加工中可配合TNC自動定位。
4. X, Y, Z軸定位精度5 $\mu$ m。
5. R軸解析度1/1000度。
6. Z1行程，可配合模具尺寸調整高度。
7. R1傾斜軸可經由光學尺精確讀出傾斜角度。
8. 可選配自動逆洗機，保持加工液清潔，提升加工速度。

**Features**

1. 4 Axes TNC machine specialized for roller, round, tire molds.
2. Single Z-Axis machining.
3. X, Y, R Axis positions can be manipulated by external microcomputer, to integrate with TNC automatic position during machining process.
4. The positional accuracy of X, Y, Z axis = 5 $\mu$ m
5. R axis resolution 1/1000 degree.
6. Z1 travelling distance can be adjusted with the height of molds.
7. R1 tilt axis can be read by ENCODER for angle of inclination.
8. Optional automatic back-flush system, to keep the dielectric fluid as clean as possible, to ensure machining efficiency at all time.

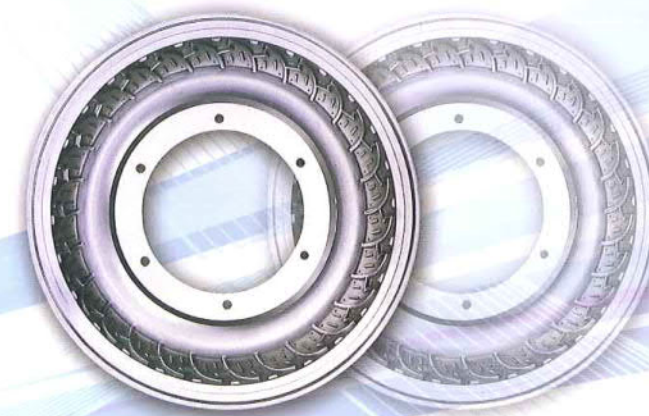
**B550/B580**

**CNC (DOS)**



**B600/B700/B770**

**TNC (DOS)**



可加工至 / Mould up to  
Ø2500mm x 4000kgs